

Lustre Dust - LD

INGREDIENTS: Synthetic Fluorphlogopite, Color.

Brief Description and Main Properties

Umang Lustre dust comes with wide range of pigments they are primarily used in personal care products & cosmetics. Surface treatment of pigments is used to improve performance in a variety of cosmetic formulations. Surface coatings improve skin feel by smoothing the rough pigment surfaces and reducing oil absorption.

Solubility

Insoluble in water.

Dosage Shelf Life

Upto 15% 3 Years

Encapsulation

Actives, Fragrance, Vitamins, Oils.

Application

Solutions For Reference

Item No.	Usage	Proportion(%)
1	Lipsticks, Lip Gloss	5-10
2	Eye shadows	10-40
3	Blusher, CC cream, Foundation	2-10
4	Blusher Rouge	2-10
5	Makeup Powders	5-10
6	Eye brow Pencils, Eye shadow Pen	2-15
7	Vanishing Cream, Face Cold Cream	2-5
8	Nail Polish, Nail UV/LED Polish Gel	2-20
9	Hair Spray, Shampoo, Perfume	0.1-10
10	Body Lotions & Body Cream	1-5
11	Soap	1-5

Features

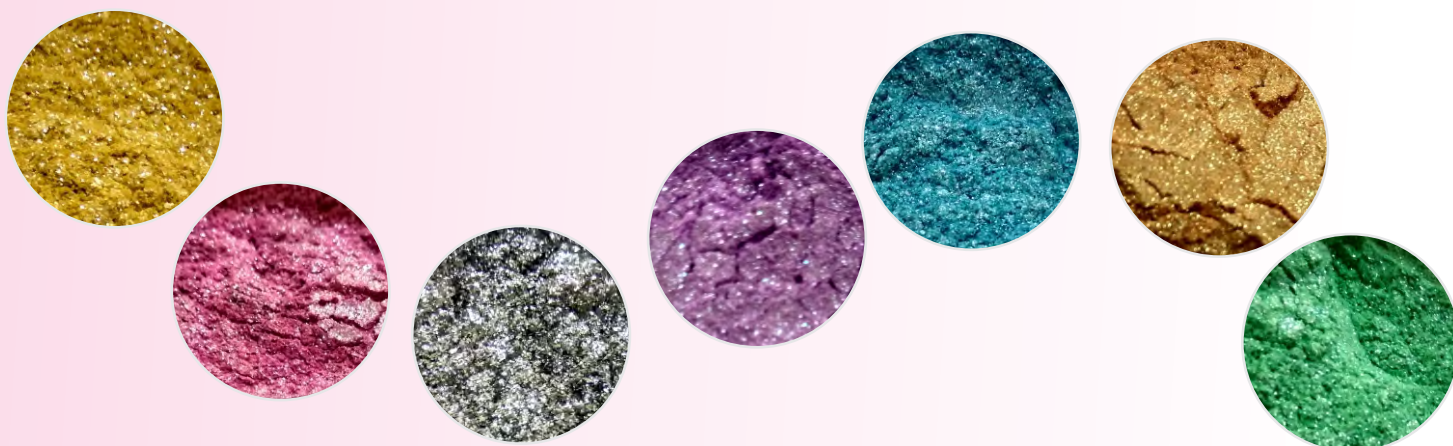
- Visual carrier systems for home & personal care Formulation with a powder, oil, and water base.
- Technology is based on unique manufacturing process dust in various colors.
- Creates visual & shining effects to your personal care products.

Advantage

- Pigments do not only provide skin enrichment effect, but also color to cosmetic products. Pigment concentrations differ per product from a liquid soap to foundation.
- Rich color goes well with all skin tones.
- Gives visual effect to your product.
- Safe to use on skin & hair.
- Helps in achieving the ideal end user experience.
- Enhances the product effectiveness & end user product experience.
- Large particle size 300-700µ and larger.

Benefits

- Formulation guideline support and is easy to formulate.
- Stable multi-layer structure.
- Better color clearness.
- Available in different colors / types.
- Customized color & actives to match your product Utility.
- Technical support application of Luster Dust in formulation.
- Regulatory support for needed registration.
- Flexible pack size & packaging quantity.
- Customized colors possible as per pantone shade card.

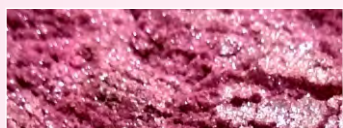


Cosmetic Pigments and Fillers

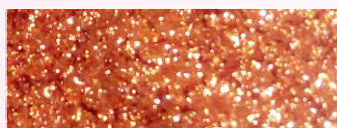
Pigment	Description
Alchemique:	<ul style="list-style-type: none"> Alchemique Pigments transform common flaked aluminum powders into a magical collection of gold & Emerald This rich collection of effects provides deep, true colors independent of the underlying skin tones normally acquired from the transparent qualities of typical effect pigments. Truly Transformational!
Argentique:	<ul style="list-style-type: none"> These pigments take pure synthetic mica flakes and apply a vapor deposition coating of pure silver over them. The result is an elegantly brilliant and mirror-like reflective surface that dramatically catches and reflects any surrounding colors providing an infinitely unique effect to a wide variety of color
Biluna pigments:	<ul style="list-style-type: none"> Biluna pigments' soft optical effects help to gently diffuse surrounding ambient light and also minimize the appearance of fine lines and wrinkles.
Chromatique Pigment:	<ul style="list-style-type: none"> These pigments provide an intense and dramatic pearlescent effect to a variety of colors that can be used in many types of cosmetic and personal care products
Diamond Pigments:	<ul style="list-style-type: none"> These pigments are capable of delivering exceptionally dramatic optical effects, including significant depth, sparkle and very intense spectral colors.
Fiesta Pigments:	<ul style="list-style-type: none"> They are an innovative line of synthetic mica-based pigments that deliver energetic iridescent colors and effects, excellent value, and advanced functionality without the risk of heavy metal.
Gold Pigments:	<ul style="list-style-type: none"> These pigments are composed of synthetic mica coated with titanium dioxide and iron oxide. Wide arrays of gold shades are obtained by differing particle sizes and the ratio of iron oxide to titanium dioxide.
Kaleidoscope Pigments:	<ul style="list-style-type: none"> This range of pigments separate light into multiple components and produce up to four dramatic and distinct interference colors: three by reflection and one by transmission, which then appear as iridescent luminosity with exceptional eye catching appeal
Metallic Pigments:	<ul style="list-style-type: none"> They add metallic depth and highlights to eye shadow, eyeliners, lipsticks, nail enamels, shampoos, soaps and many other personal care formulations. Metallic Pigments are perfect for sun care products
Optique Pigments:	<ul style="list-style-type: none"> These visually striking pigments show a pronounced color flop referred to as the flip-flop effect, meaning that the colors of the pigments change depending on the viewing angle
White Pearl Pigments:	<ul style="list-style-type: none"> Our Whites and Silver Pigments provide a soft white to silver color. Umang's Silver White Pigments vary in luster from silky and smooth, to fine sparkle, depending upon particle size and distribution. They are made by coating Titanium Oxide on a synthetic mica substrate



LD-BL-12648



LD-NPI-8101



LD-GO-8164



LD-GR-12646



LD-PU-8121



LD-YE-3101



LD-GO-8162



LD-MSM-8261

* Actual samples may vary slightly in color to that shown in the images above.

Umang Pharmatech Pvt. Ltd.

Survey No. 146, H. No.1 (PT), Vasai Phata Highway Junction, Pelhar, Nh8, Vasai (E) - 401 208, Maharashtra (India).

Tel. : (+91-0250) 6681600-10, E-mail: marketing@umangpharmatech.com, Website: www.umangpharma.com | www.natural-exfoliator.com